

Using linux at UIC

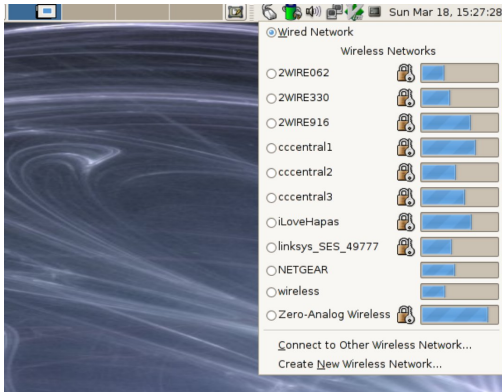
UIC Linux Users Group

September 8, 2010

802.1x (Dynamic WEP)

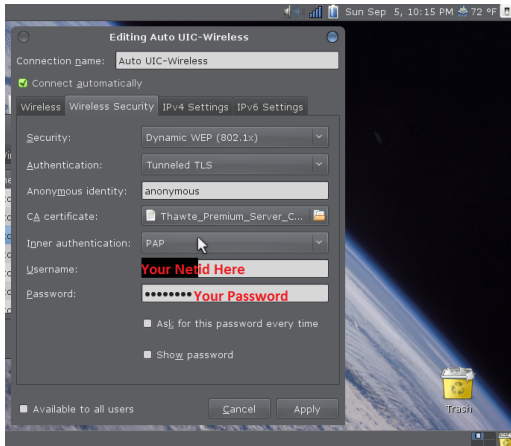
- ▶ Wireless security mechanism designed to address shortcomings in previous wireless security schemes.
- ▶ Per user Authentication
- ▶ implemented before wpa2

Network Manager



connecting to the network

<http://acm.cs.uic.edu/uicwireless-linux>
security: dynamic wep (802.1x)



network settings

- ▶ Network name: UIC-Wireless
- ▶ Wireless Security: Dynamic WEP (802.1x)
- ▶ Authentication: Tunneled TLS
- ▶ Anonymous Identity: anonymous
- ▶ inner Authentication: PAP
- ▶ Username: ACCC NETID
- ▶ Password: ACCC PASSWORD

Wireless
Printing
Turnin
UIC Servers
Getting Help

About 802.1x
Network Manager
Wireless Settings

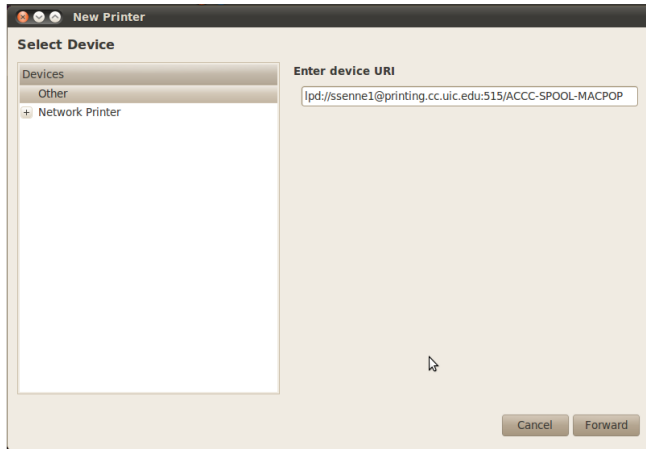
Pray

Pray...

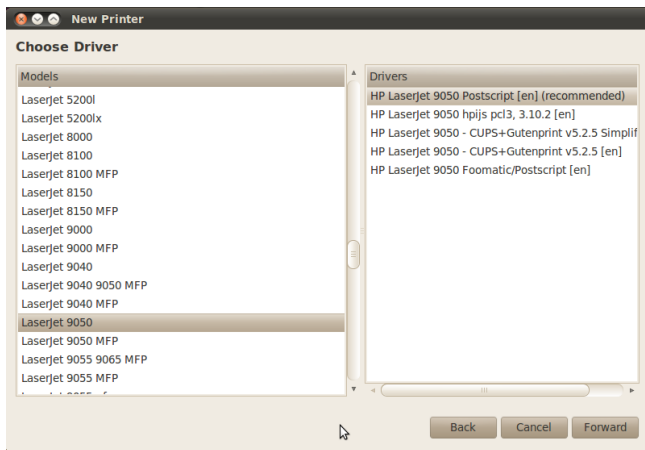
Pharos

Pharos is ACCC's print management system at UIC.

Setup



Select Printer Driver



Name Printer

New Printer

Describe Printer

Printer Name
Short name for this printer such as "laserjet"

Description (optional)
Human-readable description such as "HP LaserJet with Duplexer"

Location (optional)
Human-readable location such as "Lab 1"

Summary

URI:

lpd://NETID@printing.cc.uic.edu:515/ACCC-SPOOL-MACPOP

Select printer from database: HP LaserJet 9050 Postscript en

Select Duplex if you want

What is turnin

turnin is a a unix program for turning in CS proگرامing assignments.

Features of Turnin

- ▶ Verify that your program was turned in successfully
- ▶ turn in asignment multiple times (until the deadline)

Checking the List of Assignments

```
turnin -c cs102 -l
```

Turning in an Assignment

```
turnin -c cs102 -p prog1 myfile  
turnin -c cs102 -p prog1 MyProjectFolder  
turnin -c cs102 -p prog1 *.java
```


Ensuring That an Assigment Was Turned In

```
turnin -c cs102 -p prog1 -v
```

Turning in an Assignment a Second Time

```
turnin -c cs102 -p prog1 myfile  
turnin -c cs102 -p prog1 MyProjectFolder  
turnin -c cs102 -p prog1 *.java
```

UIC Servers

2 campus departments manage servers we have access to: ACCC and the CS department.

icarus.uic.edu

- ▶ ACCC server
- ▶ web hosting
- ▶ php, perl, bluestem, html
- ▶ shell access
- ▶ <http://www2.uic.edu/~netid/>
- ▶ Solaris

Bert

- ▶ CS Department Server
- ▶ html
- ▶ Web hosting
- ▶ <http://cs.uic.edu/~cslogin/>
- ▶ RHEL 5.5

How to use webspace

- ▶ create a `~/public_html` directory

ACCC

The ACCC officially does not support linux, and will usually turn you away if seek assistance from them.

Issues with ACCC

- ▶ ACCC account trouble
- ▶ windows/mac labs
- ▶ uic email
- ▶ wireless/resnet

Contacting ACCC

- ▶ talk to any ACCC consultant or lab monitor
- ▶ consult@uic.edu
- ▶ SEL 2267
- ▶ 312-413-0003

Issues with CS department Computers

- ▶ If you don't know your account info
- ▶ If you your account info doesn't work
- ▶ If you need help using software
- ▶ If you need software installed for a class.

Contacting CS department

- ▶ pester Stephen Liang



- ▶ email support@cs.uic.edu